

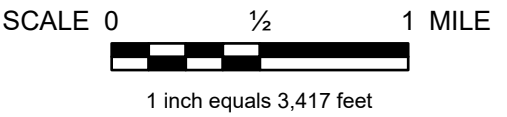
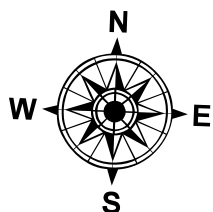
# OCEOLA TOWNSHIP

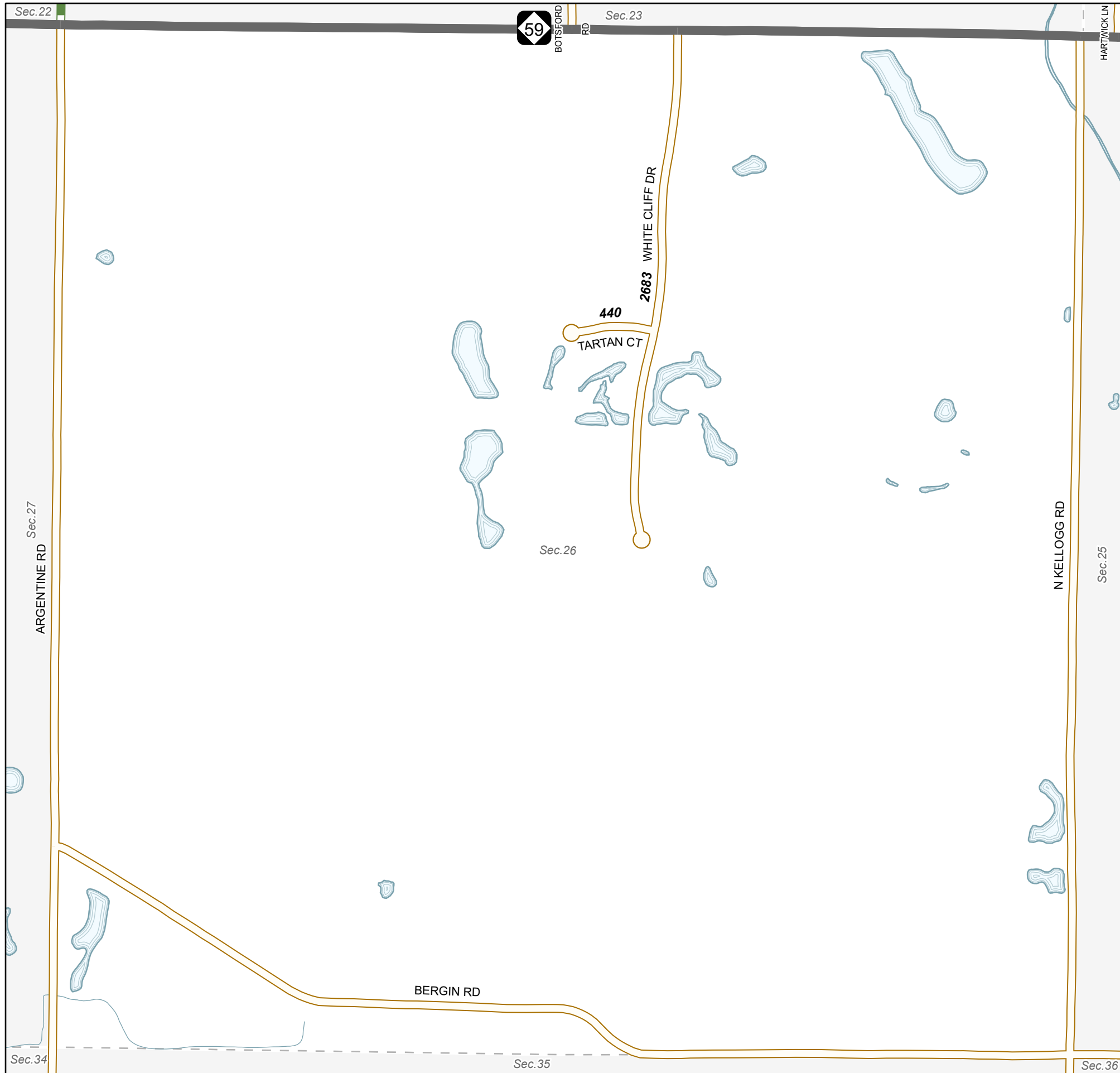
LIVINGSTON COUNTY - 47 T. 3N R. 5E

PRIMARY ROAD SYSTEM IS 15.54 MILES  
 LOCAL ROAD SYSTEM IS 49.59 MILES

**LEGEND**

- COUNTY LINE
- CORPORATE LIMITS
- STATE TRUNKLINE
- COUNTY PRIMARY
- COUNTY LOCAL
- ADJACENT COUNTY
- CITY OR VILLAGE
- STREET





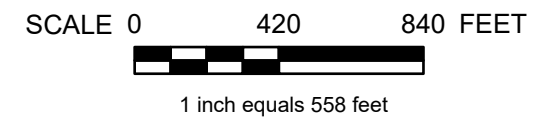
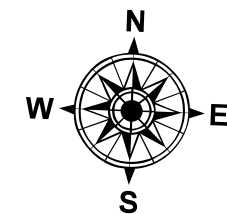
# OCEOLA TOWNSHIP

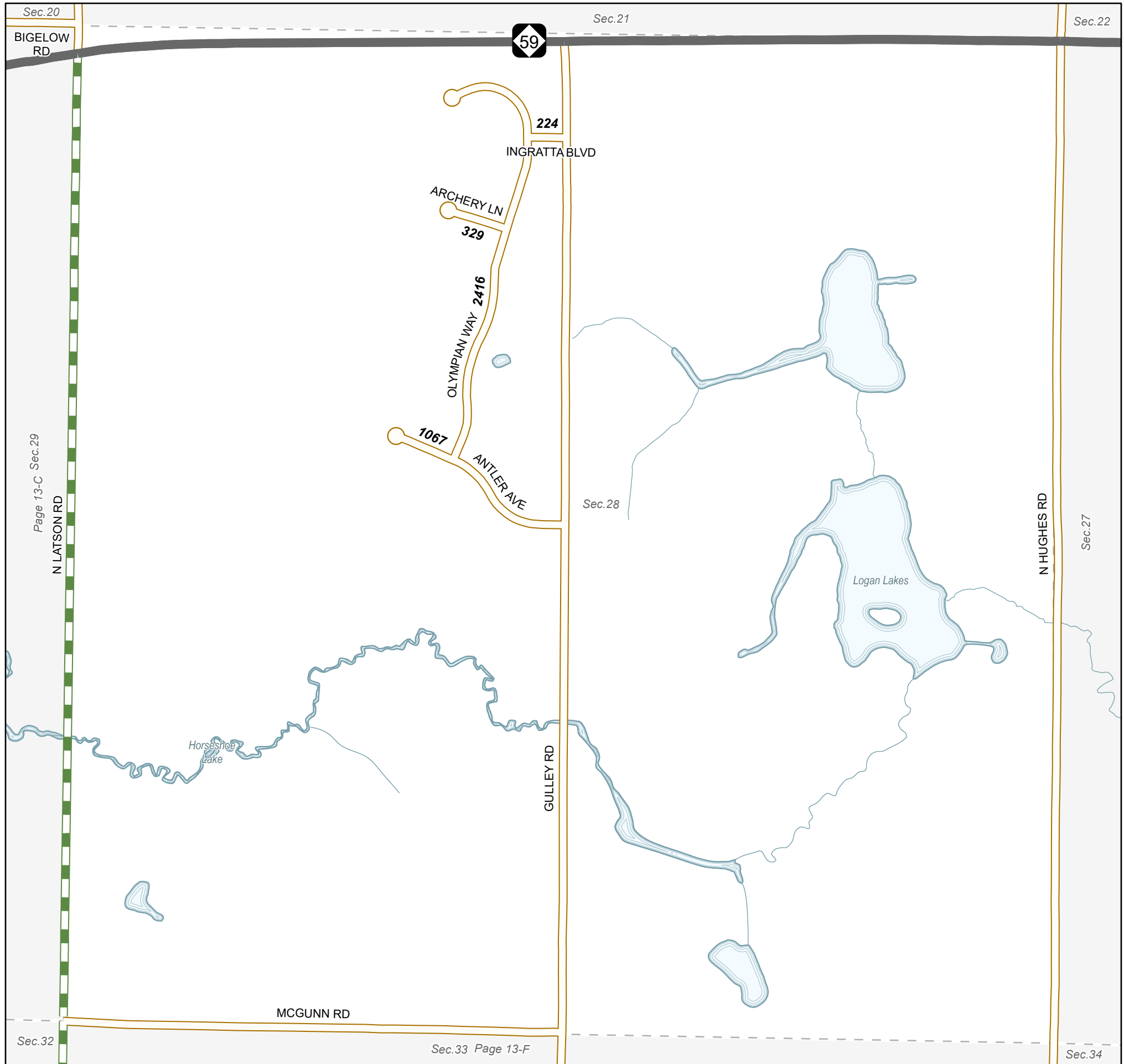
LIVINGSTON COUNTY - 47 T. 3N R. 5E

## SECTION 26

TOTAL FEET 3,123 EQUALS 0.59 MILES

LEGEND	
COUNTY LINE	-----
CORPORATE LIMITS	-----
SECTION LINE	-----
STATE TRUNKLINE	—————
COUNTY PRIMARY	▬▬▬▬▬▬▬▬▬▬
COUNTY LOCAL	▬▬▬▬▬▬▬▬▬▬
ADJACENT COUNTY	▬▬▬▬▬▬▬▬▬▬
CITY OR VILLAGE STREET	—————





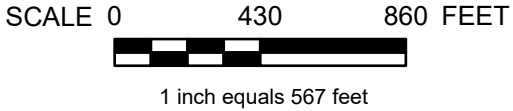
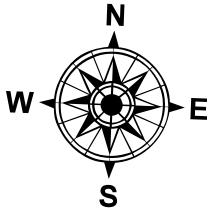
# OCEOLA TOWNSHIP

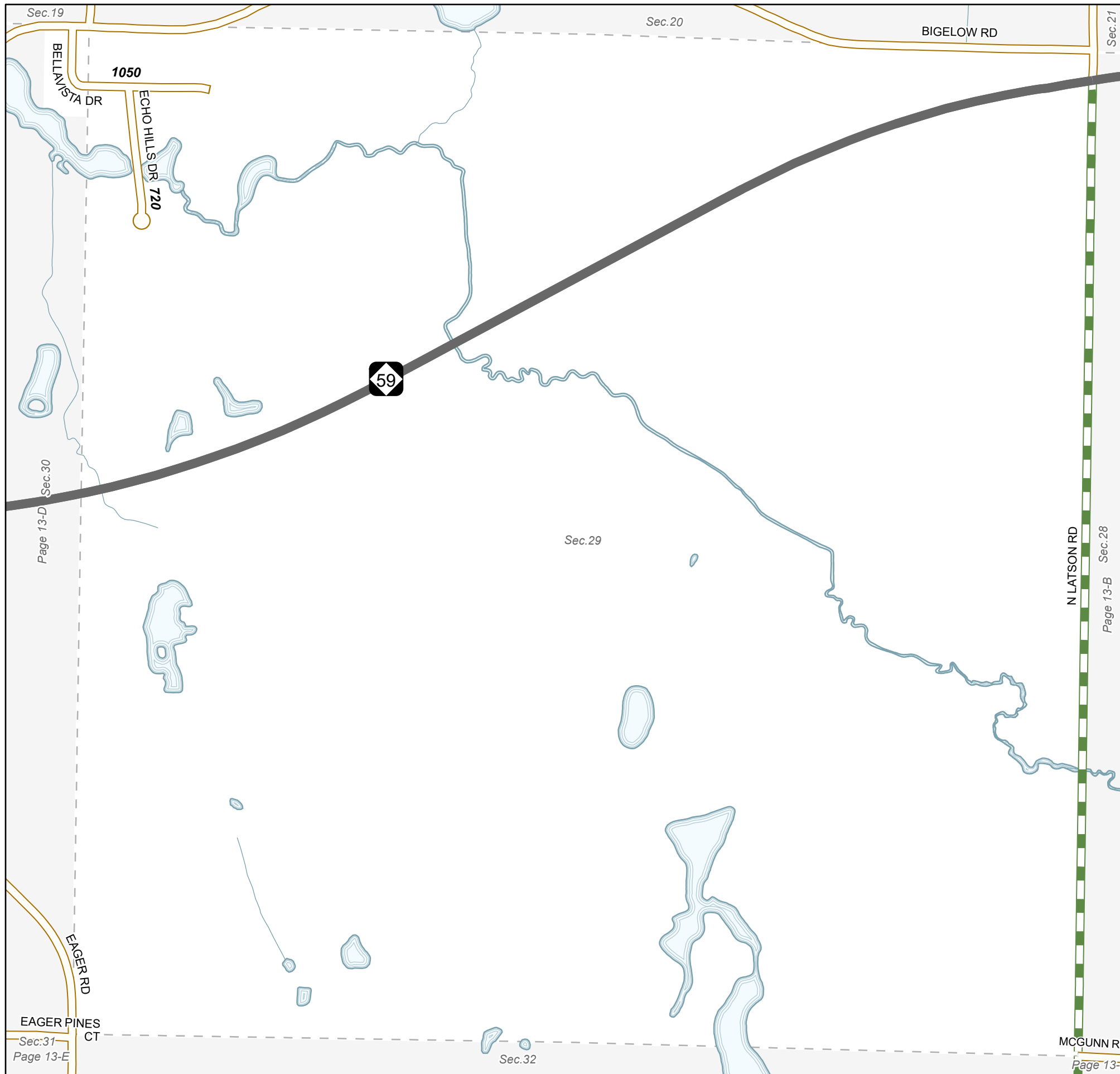
LIVINGSTON COUNTY - 47 T. 3N R. 5E

## SECTION 28

TOTAL FEET 4,036 EQUALS 0.76 MILES

LEGEND	
COUNTY LINE	-----
CORPORATE LIMITS	-----
SECTION LINE	-----
STATE TRUNKLINE	—————
COUNTY PRIMARY	▬▬▬▬▬▬
COUNTY LOCAL	▬▬▬▬▬▬
ADJACENT COUNTY	▬▬▬▬▬▬
CITY OR VILLAGE STREET	—————





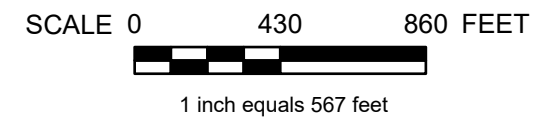
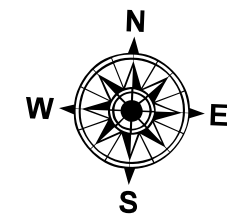
# OCEOLA TOWNSHIP

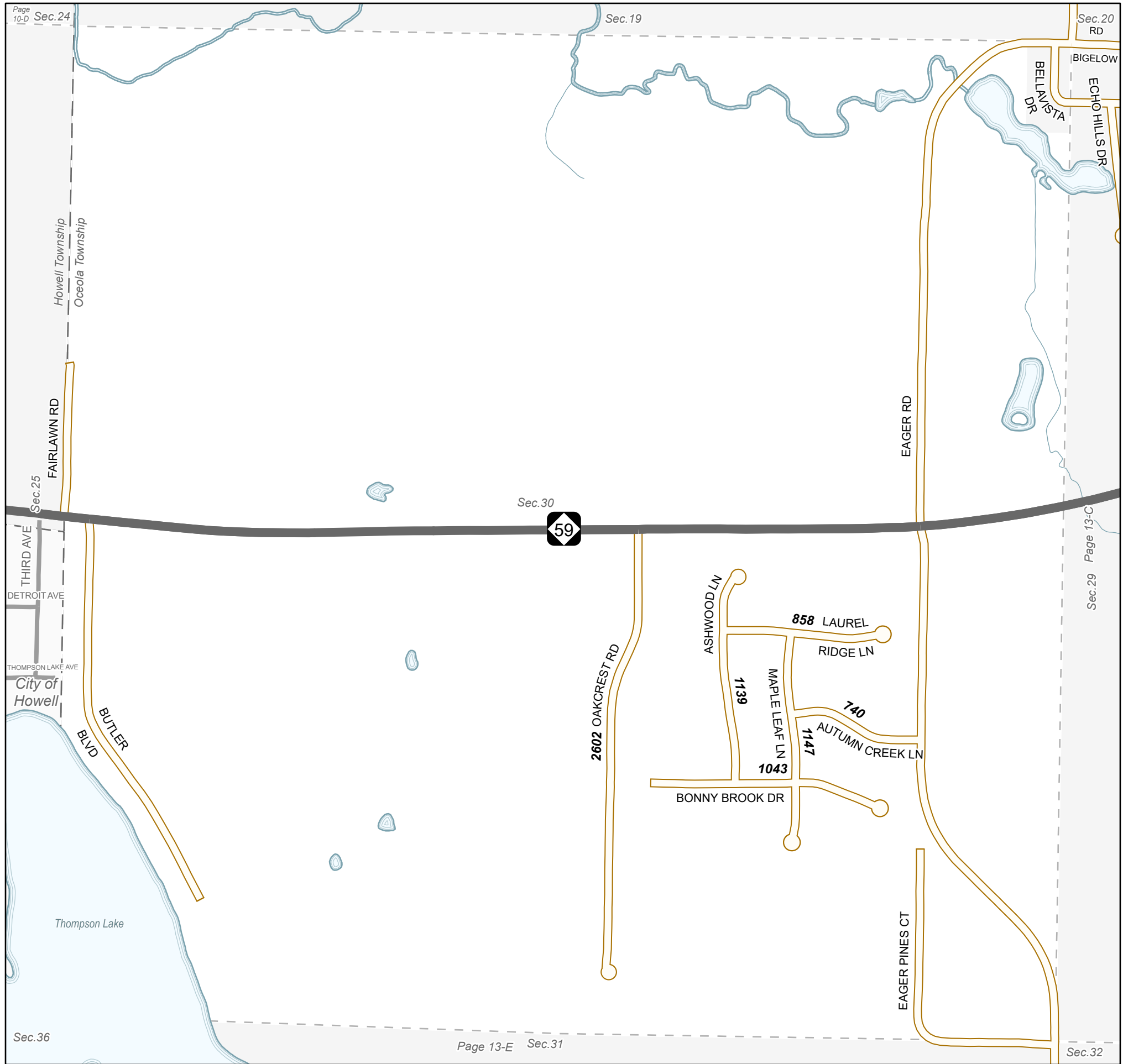
LIVINGSTON COUNTY - 47 T. 3N R. 5E

## SECTION 29 & 30

TOTAL FEET 1,770 EQUALS 0.34 MILES

LEGEND	
COUNTY LINE	-----
CORPORATE LIMITS	- - - - -
SECTION LINE	-----
STATE TRUNKLINE	—————
COUNTY PRIMARY	▬▬▬▬▬▬
COUNTY LOCAL	▬▬▬▬▬▬
ADJACENT COUNTY	▬▬▬▬▬▬
CITY OR VILLAGE STREET	—————





# OCEOLA TOWNSHIP

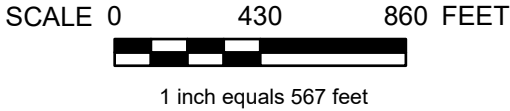
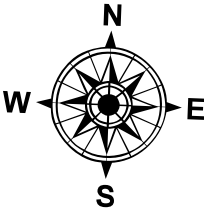
LIVINGSTON COUNTY - 47 T. 3N R. 5E

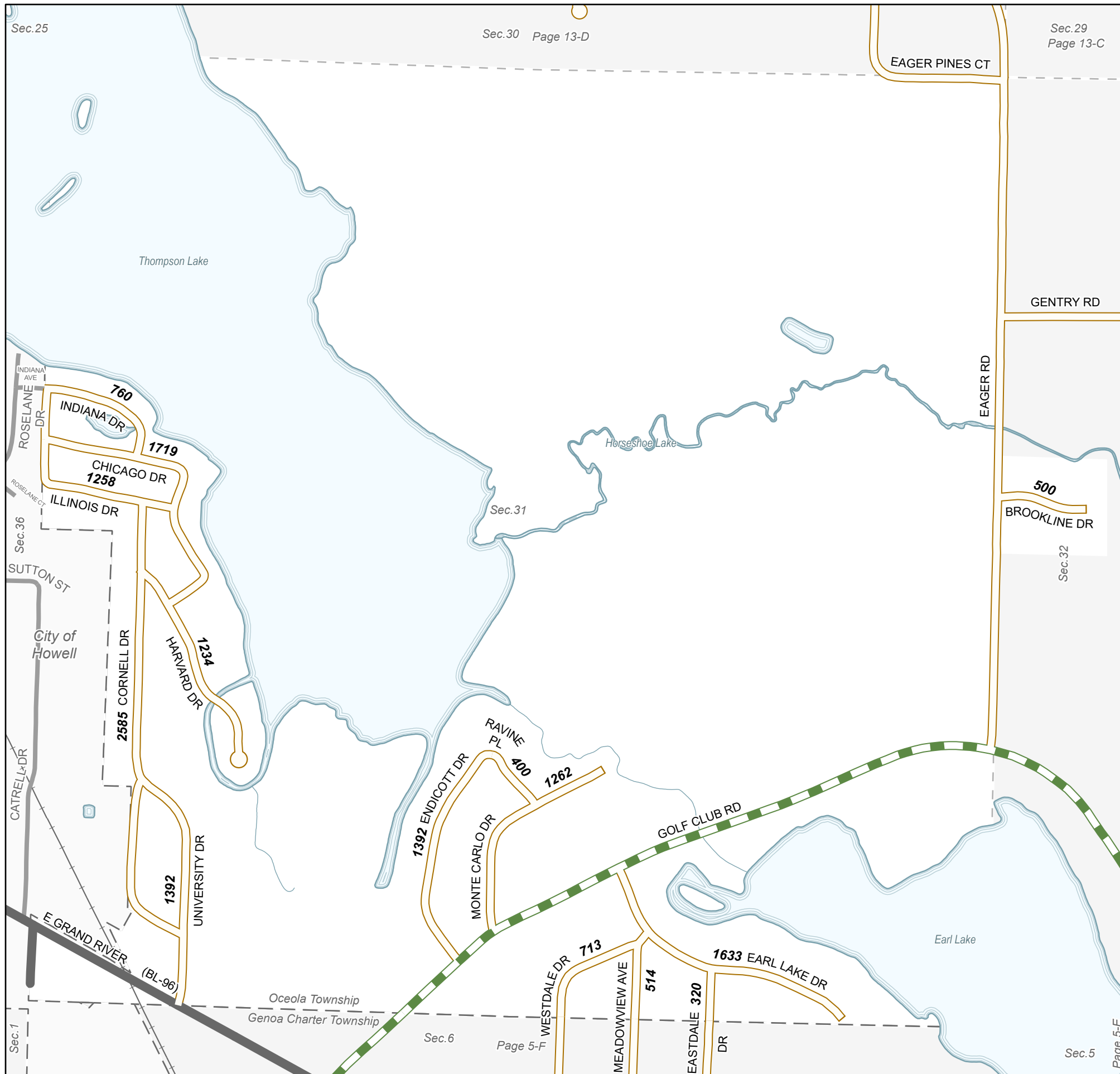
## SECTION 30

TOTAL FEET 7,529 EQUALS 1.43 MILES

LEGEND

COUNTY LINE	---
CORPORATE LIMITS	- - - -
SECTION LINE	- · - · -
STATE TRUNKLINE	▬
COUNTY PRIMARY	▬▬▬▬▬▬
COUNTY LOCAL	▬▬▬▬▬▬
ADJACENT COUNTY	▬▬▬▬▬▬
CITY OR VILLAGE STREET	▬▬▬▬▬▬





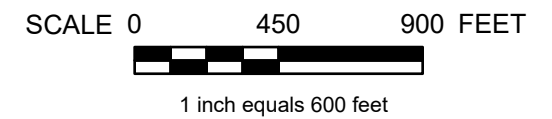
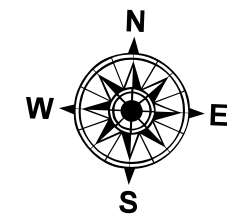
# OCEOLA TOWNSHIP

LIVINGSTON COUNTY - 47 T. 3N R. 5E

## SECTION 31 & 32

TOTAL FEET 15,682 EQUALS 2.97 MILES

LEGEND	
COUNTY LINE	
CORPORATE LIMITS	
SECTION LINE	
STATE TRUNKLINE	
COUNTY PRIMARY	
COUNTY LOCAL	
ADJACENT COUNTY	
CITY OR VILLAGE STREET	





# OCEOLA TOWNSHIP

LIVINGSTON COUNTY - 47 T. 3N R. 5E

## SECTION 33

TOTAL FEET 3,866 EQUALS 0.73 MILES

LEGEND

COUNTY LINE	---
CORPORATE LIMITS	---
SECTION LINE	---
STATE TRUNKLINE	—
COUNTY PRIMARY	█
COUNTY LOCAL	▭
ADJACENT COUNTY	▭
CITY OR VILLAGE STREET	---

