

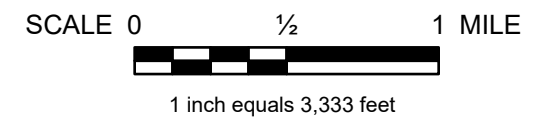
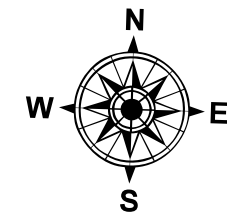
HOWELL TOWNSHIP

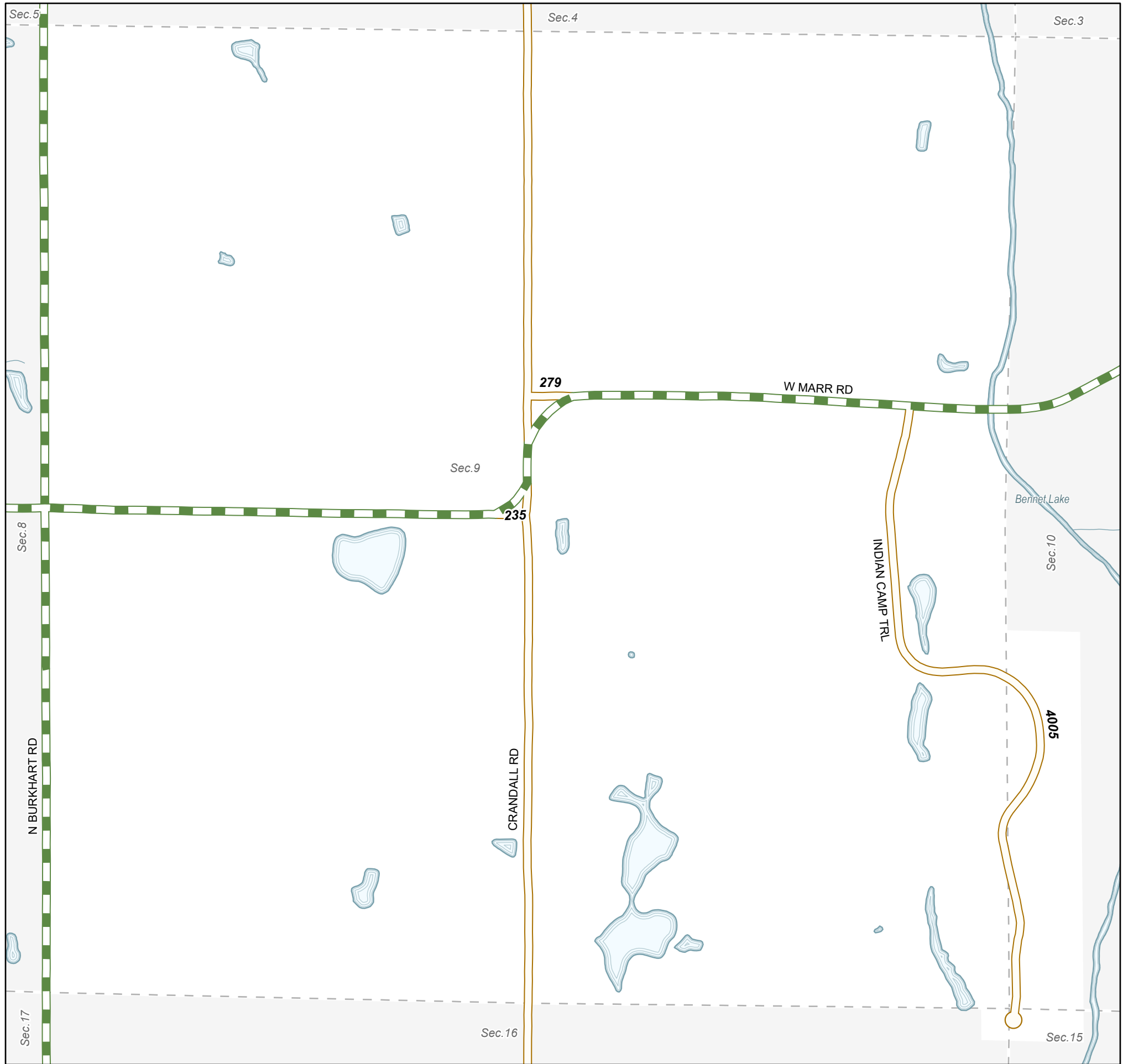
LIVINGSTON COUNTY - 47 T. 3N R. 4E

PRIMARY ROAD SYSTEM IS **30.21** MILES
 LOCAL ROAD SYSTEM IS **42.99** MILES

LEGEND

- COUNTY LINE
- CORPORATE LIMITS
- STATE TRUNKLINE
- COUNTY PRIMARY
- COUNTY LOCAL
- ADJACENT COUNTY
- CITY OR VILLAGE STREET





HOWELL TOWNSHIP

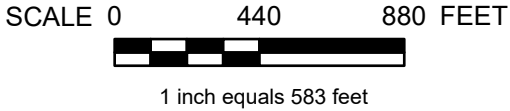
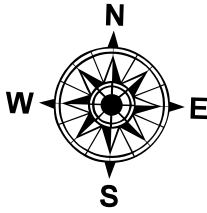
LIVINGSTON COUNTY - 47 T. 3N R. 4E

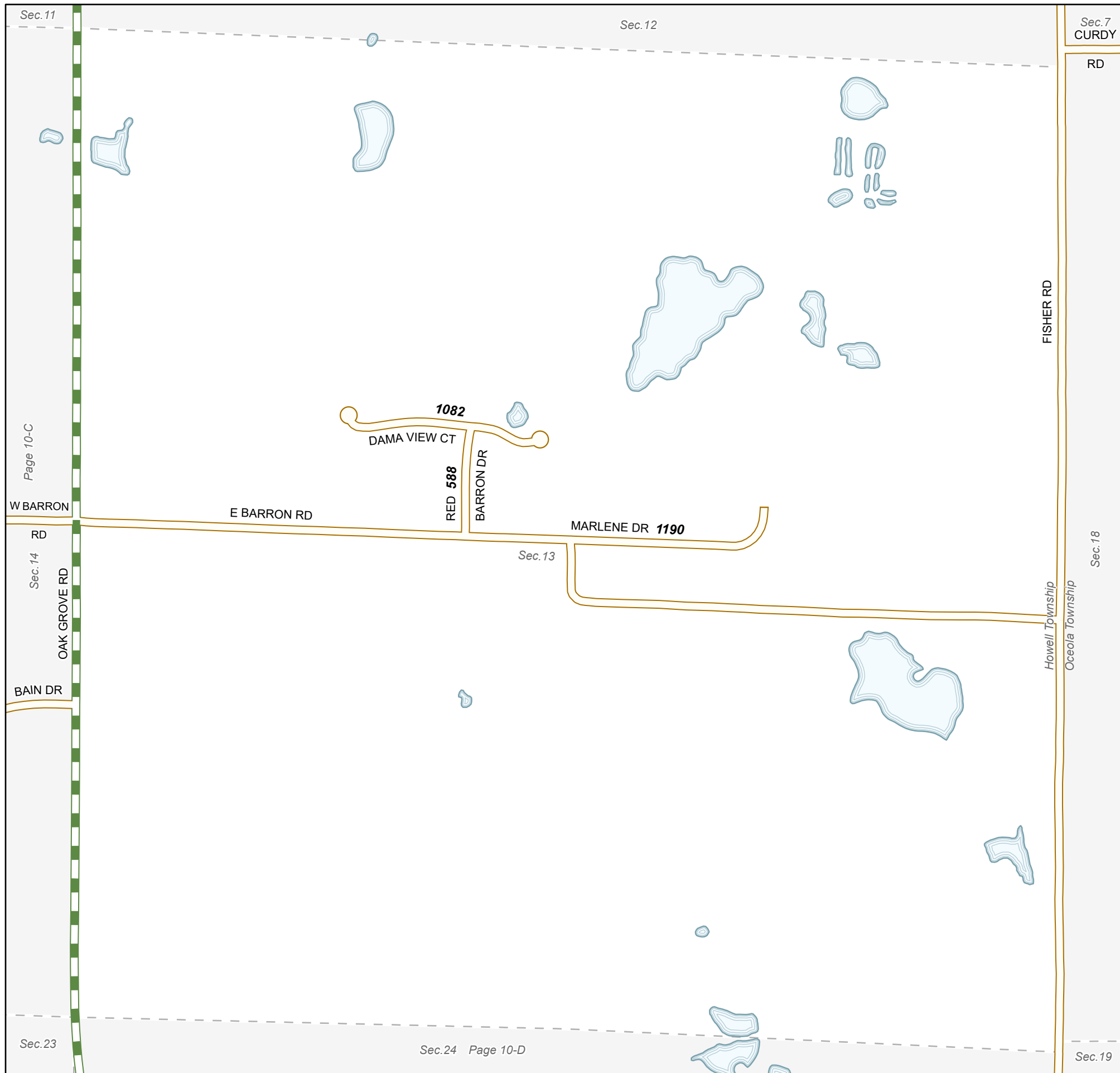
SECTION 9 & 10

TOTAL FEET 4,519 EQUALS 0.86 MILES

LEGEND

COUNTY LINE	---
CORPORATE LIMITS	---
SECTION LINE	---
STATE TRUNKLINE	—
COUNTY PRIMARY	▬▬▬▬▬▬
COUNTY LOCAL	▬▬▬▬▬▬
ADJACENT COUNTY	▬▬▬▬▬▬
CITY OR VILLAGE STREET	---





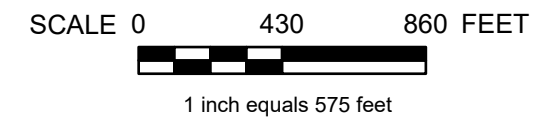
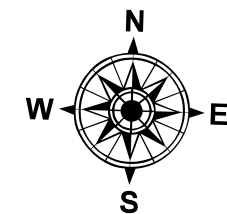
HOWELL TOWNSHIP

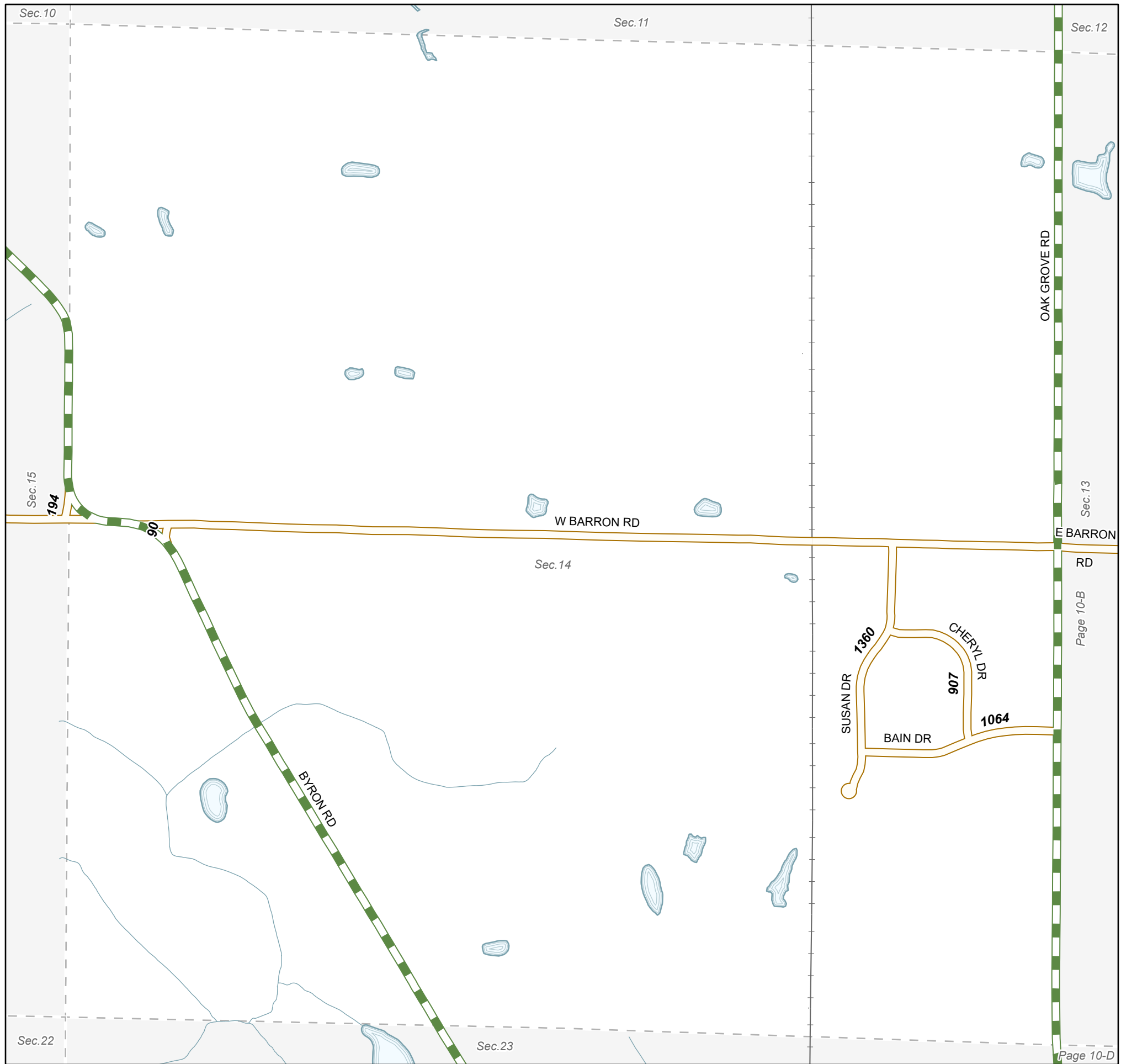
LIVINGSTON COUNTY - 47 T. 3N R. 4E

SECTION 13

TOTAL FEET 2,860 EQUALS 0.54 MILES

LEGEND	
COUNTY LINE	-----
CORPORATE LIMITS	-----
SECTION LINE	-----
STATE TRUNKLINE	—————
COUNTY PRIMARY	▬▬▬▬▬▬▬▬▬▬
COUNTY LOCAL	▬▬▬▬▬▬▬▬▬▬
ADJACENT COUNTY	▬▬▬▬▬▬▬▬▬▬
CITY OR VILLAGE STREET	—————





HOWELL TOWNSHIP

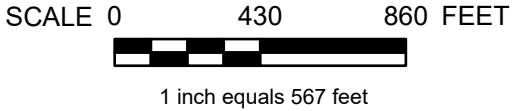
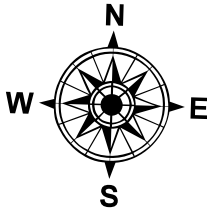
LIVINGSTON COUNTY - 47 T. 3N R. 4E

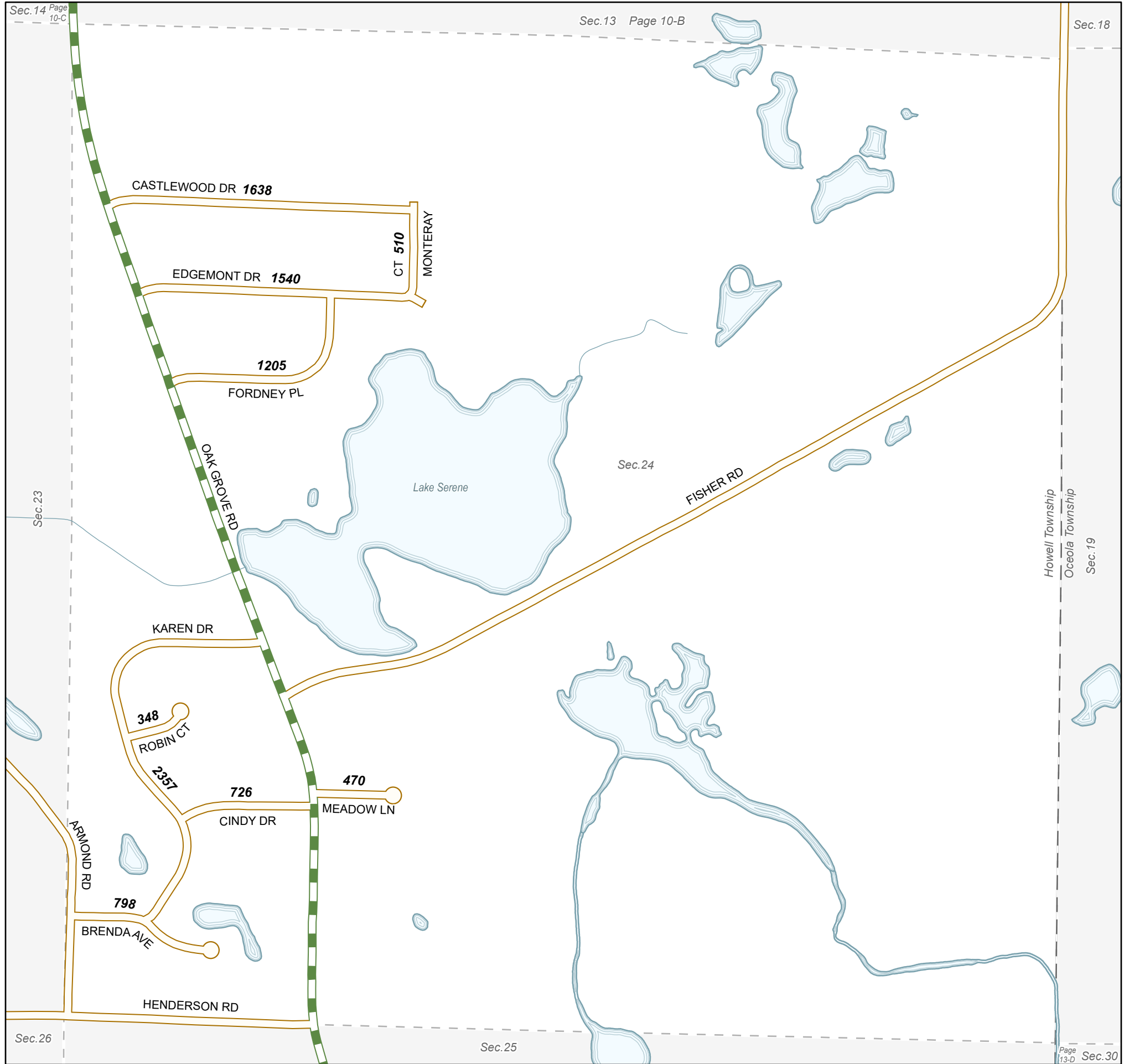
SECTION 14

TOTAL FEET 3,615 EQUALS 0.68 MILES

LEGEND

COUNTY LINE	-----
CORPORATE LIMITS	-----
SECTION LINE	-----
STATE TRUNKLINE	—————
COUNTY PRIMARY	▬▬▬▬▬▬
COUNTY LOCAL	▬▬▬▬▬▬
ADJACENT COUNTY	▬▬▬▬▬▬
CITY OR VILLAGE STREET	—————





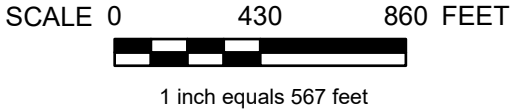
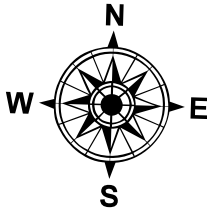
HOWELL TOWNSHIP

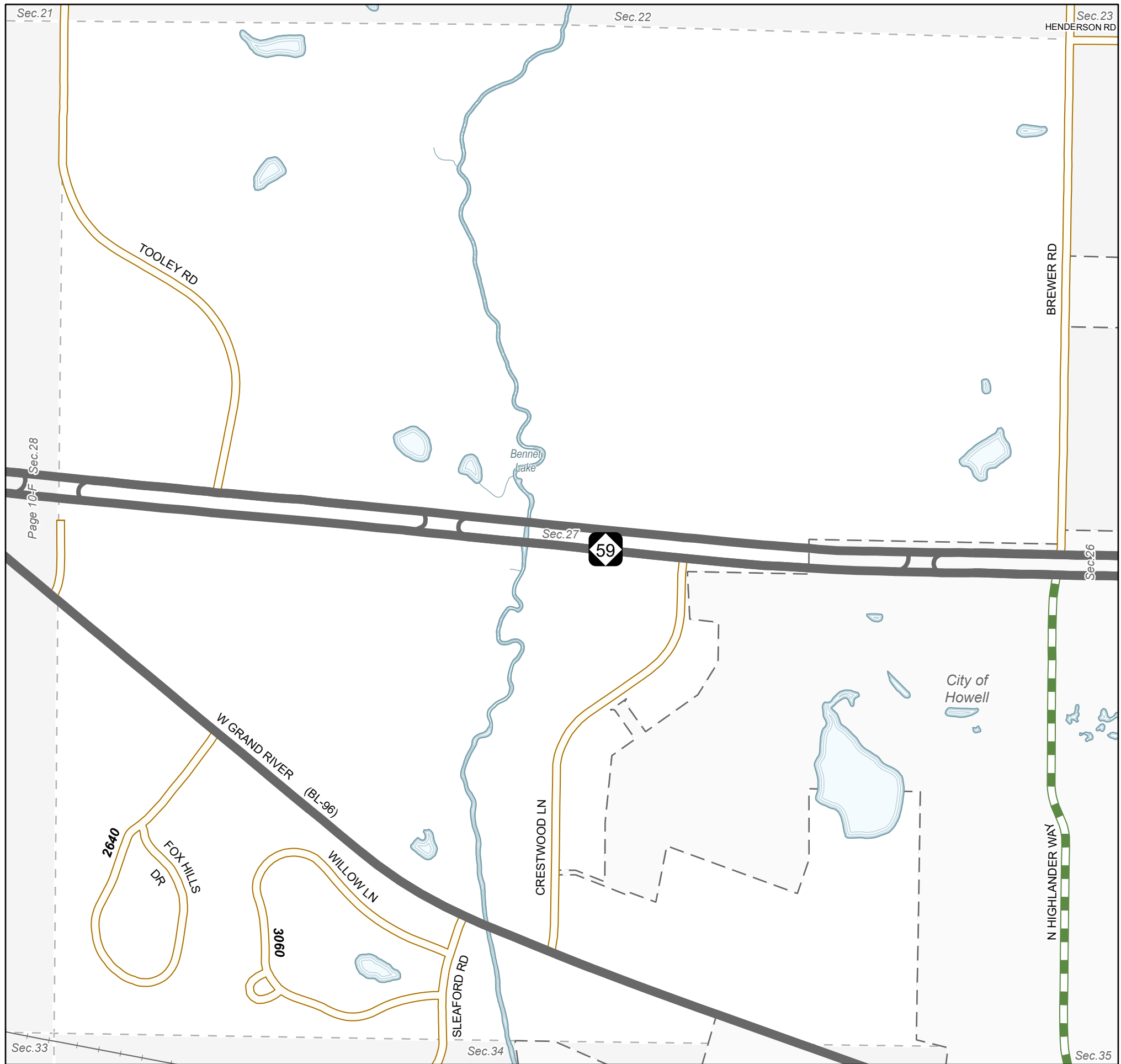
LIVINGSTON COUNTY - 47 T. 3N R. 4E

SECTION 24

TOTAL FEET 9,592 EQUALS 1.82 MILES

LEGEND	
COUNTY LINE	-----
CORPORATE LIMITS	-----
SECTION LINE	-----
STATE TRUNKLINE	—————
COUNTY PRIMARY	▬▬▬▬▬▬▬▬▬▬
COUNTY LOCAL	▬▬▬▬▬▬▬▬▬▬
ADJACENT COUNTY	▬▬▬▬▬▬▬▬▬▬
CITY OR VILLAGE STREET	—————





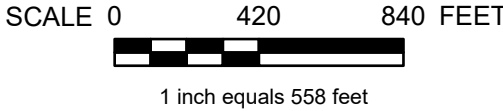
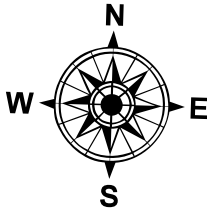
HOWELL TOWNSHIP

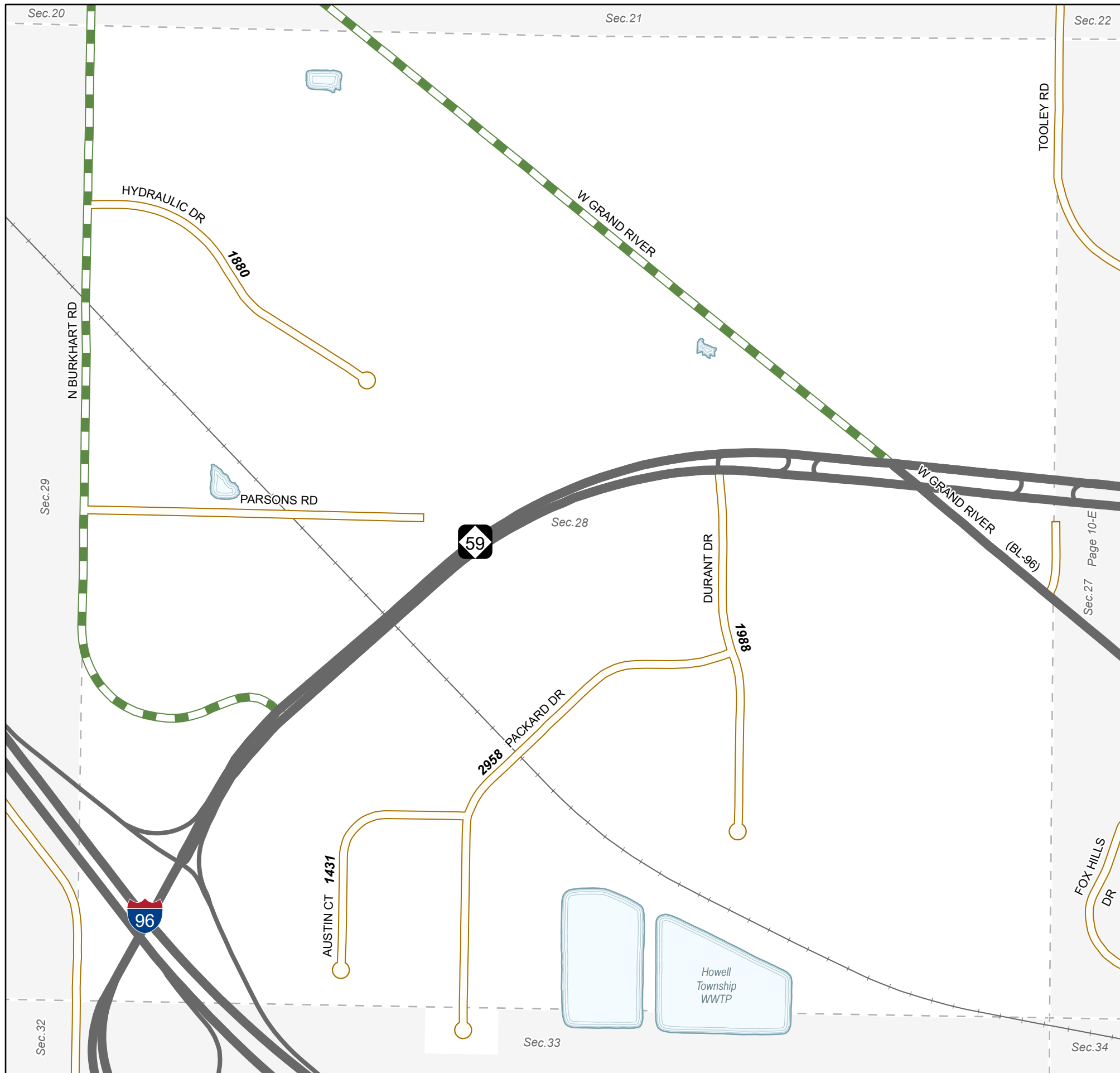
LIVINGSTON COUNTY - 47 T. 3N R. 4E

SECTION 27

TOTAL FEET 5,700 EQUALS 1.08 MILES

LEGEND	
COUNTY LINE	-----
CORPORATE LIMITS	-----
SECTION LINE	-----
STATE TRUNKLINE	—————
COUNTY PRIMARY	▬▬▬▬▬▬▬▬▬▬
COUNTY LOCAL	▬▬▬▬▬▬▬▬▬▬
ADJACENT COUNTY	▬▬▬▬▬▬▬▬▬▬
CITY OR VILLAGE STREET	—————





HOWELL TOWNSHIP

LIVINGSTON COUNTY - 47 T. 3N R. 4E

SECTION 28

TOTAL FEET 8,257 EQUALS 1.56 MILES

LEGEND	
COUNTY LINE	--- (dashed line)
CORPORATE LIMITS	- - - (long dashed line)
SECTION LINE	- - - (short dashed line)
STATE TRUNKLINE	— (thick solid line)
COUNTY PRIMARY	— (green dashed line)
COUNTY LOCAL	— (orange solid line)
ADJACENT COUNTY	— (line with cross-ticks)
CITY OR VILLAGE STREET	— (thin solid line)

