

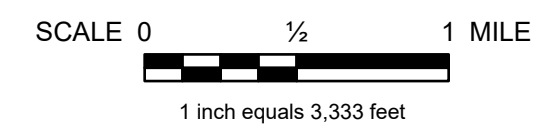
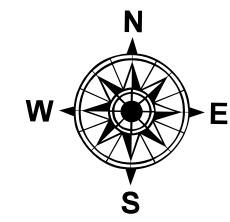
# HANDY TOWNSHIP

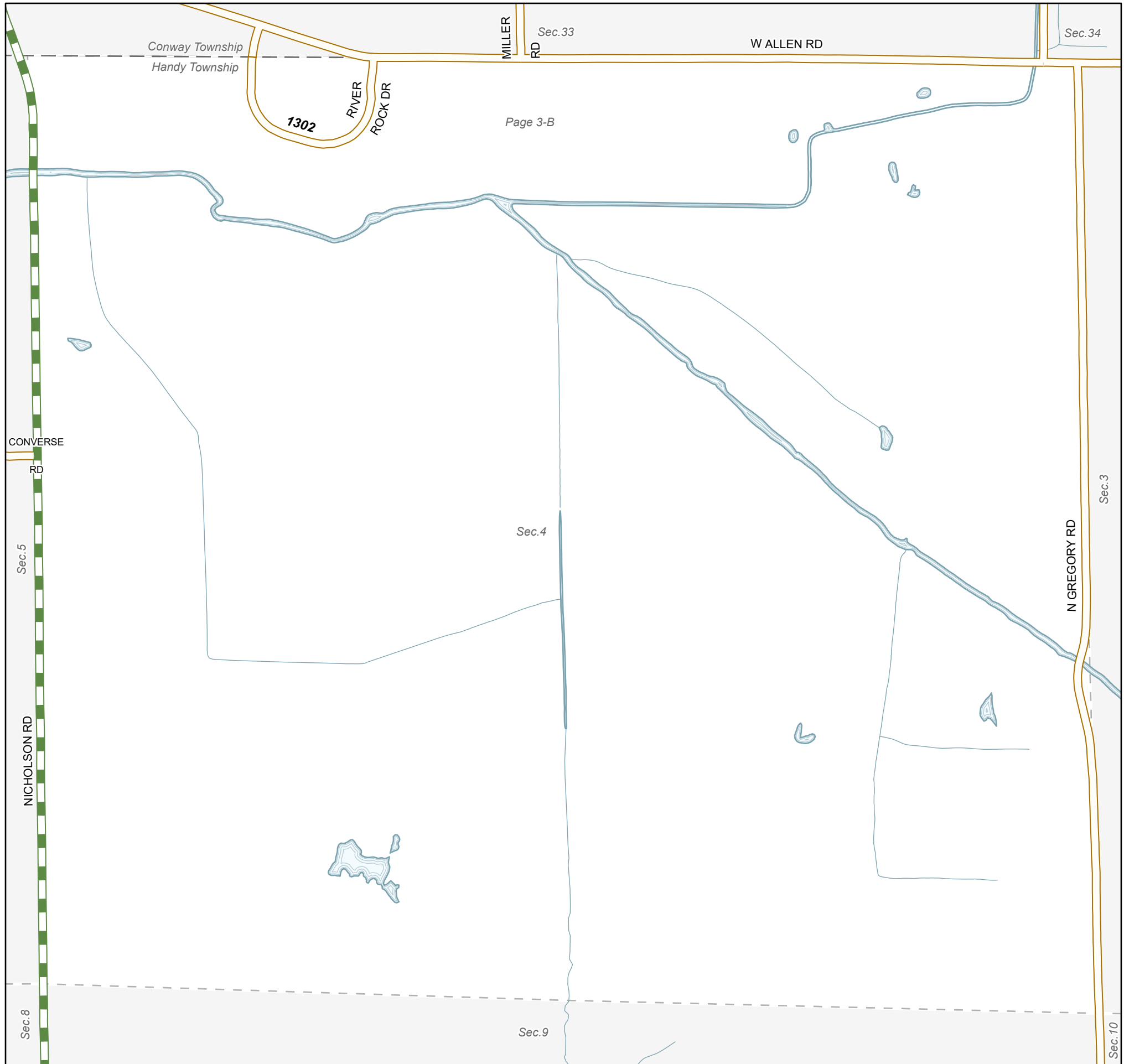
LIVINGSTON COUNTY - 47 T. 3N R. 3E

PRIMARY ROAD SYSTEM IS **20.69** MILES  
 LOCAL ROAD SYSTEM IS **45.58** MILES

**LEGEND**

- COUNTY LINE
- CORPORATE LIMITS
- STATE TRUNKLINE
- COUNTY PRIMARY
- COUNTY LOCAL
- ADJACENT COUNTY
- CITY OR VILLAGE STREET





# HANDY TOWNSHIP

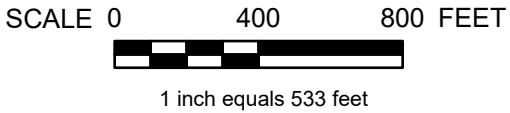
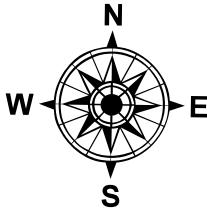
LIVINGSTON COUNTY - 47 T. 3N R. 3E

## SECTION 4

TOTAL FEET 1,302 EQUALS 0.25 MILES

LEGEND

COUNTY LINE	---
CORPORATE LIMITS	- - - - -
SECTION LINE	- - - - -
STATE TRUNKLINE	██████████
COUNTY PRIMARY	▬▬▬▬▬▬
COUNTY LOCAL	▭▭▭▭▭▭
ADJACENT COUNTY	▧▧▧▧▧▧
CITY OR VILLAGE STREET	▬▬▬▬▬▬





# HANDY TOWNSHIP

LIVINGSTON COUNTY - 47 T. 3N R. 3E

## SECTION 35

TOTAL FEET 1,020 EQUALS 0.19 MILES

LEGEND	
COUNTY LINE	-----
CORPORATE LIMITS	-----
SECTION LINE	-----
STATE TRUNKLINE	—————
COUNTY PRIMARY	▬▬▬▬▬▬▬▬▬▬
COUNTY LOCAL	▬▬▬▬▬▬▬▬▬▬
ADJACENT COUNTY	▬▬▬▬▬▬▬▬▬▬
CITY OR VILLAGE STREET	—————

