

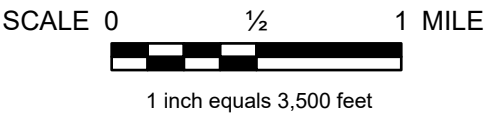
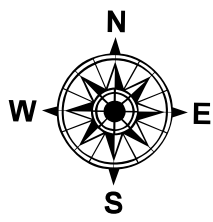
# CONWAY TOWNSHIP

LIVINGSTON COUNTY - 47 T. 4N R. 3E

PRIMARY ROAD SYSTEM IS **22.25** MILES  
 LOCAL ROAD SYSTEM IS **45.56** MILES

**LEGEND**

- COUNTY LINE
- CORPORATE LIMITS
- STATE TRUNKLINE
- COUNTY PRIMARY
- COUNTY LOCAL
- ADJACENT COUNTY
- CITY OR VILLAGE STREET



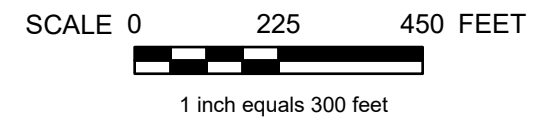
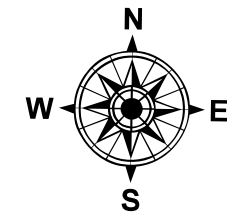
# CONWAY TOWNSHIP

LIVINGSTON COUNTY - 47 T. 4N R. 3E

## SECTION 10

TOTAL FEET 180 EQUALS 0.03 MILES

LEGEND	
COUNTY LINE	-----
CORPORATE LIMITS	-----
SECTION LINE	-----
STATE TRUNKLINE	—————
COUNTY PRIMARY	▬▬▬▬▬▬▬▬▬▬
COUNTY LOCAL	▬▬▬▬▬▬▬▬▬▬
ADJACENT COUNTY	▬▬▬▬▬▬▬▬▬▬
CITY OR VILLAGE STREET	—————

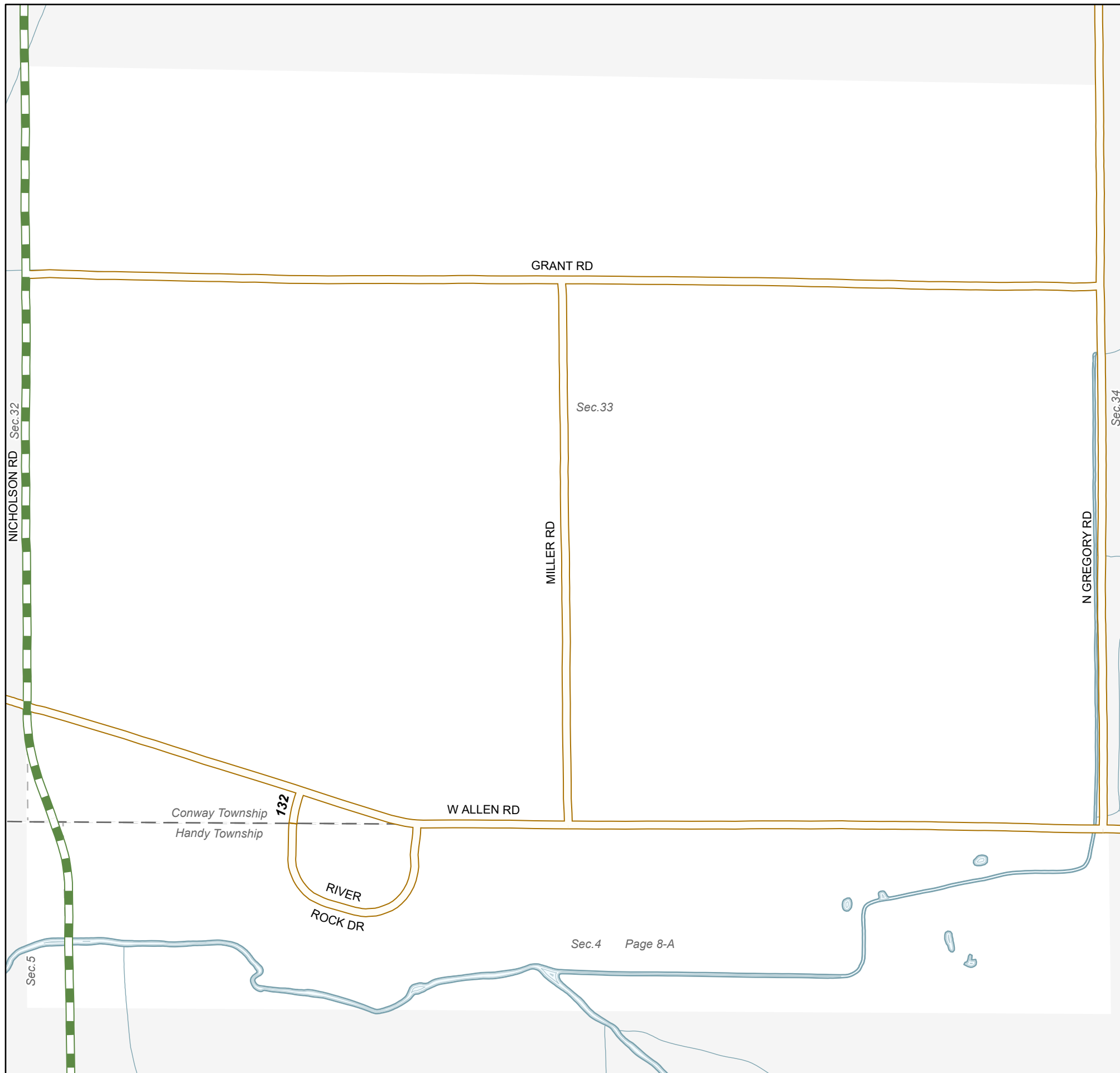


# CONWAY TOWNSHIP

LIVINGSTON COUNTY - 47 T. 4N R. 3E

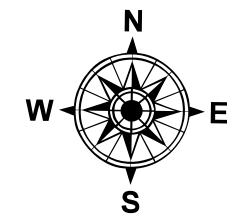
## SECTION 33

TOTAL FEET 132 EQUALS 0.03 MILES



### LEGEND

- COUNTY LINE
- CORPORATE LIMITS
- SECTION LINE
- STATE TRUNKLINE
- COUNTY PRIMARY
- COUNTY LOCAL
- ADJACENT COUNTY
- CITY OR VILLAGE STREET



SCALE 0 400 800 FEET



1 inch equals 525 feet