



COHOCTAH TOWNSHIP

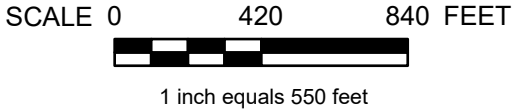
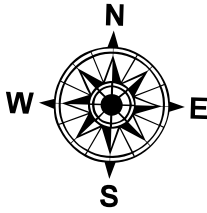
LIVINGSTON COUNTY - 47 T. 4N R. 4E

SECTION 26

TOTAL FEET 1,322 EQUALS 0.25 MILES

LEGEND

COUNTY LINE	---
CORPORATE LIMITS	---
SECTION LINE	---
STATE TRUNKLINE	—
COUNTY PRIMARY	▬▬▬▬▬▬
COUNTY LOCAL	▬▬▬▬▬▬
ADJACENT COUNTY	▬▬▬▬▬▬
CITY OR VILLAGE STREET	▬▬▬▬▬▬



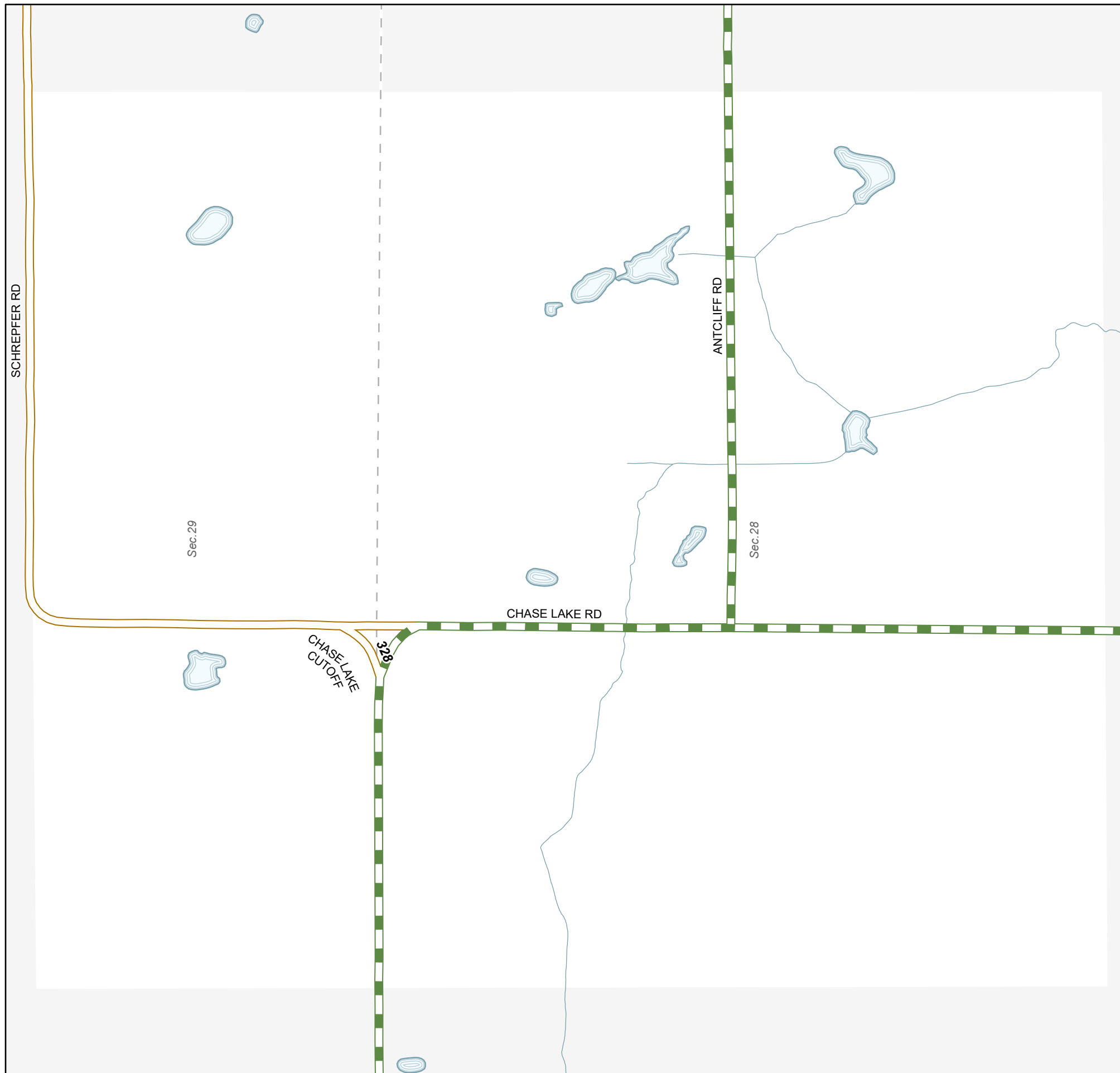
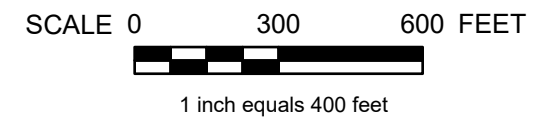
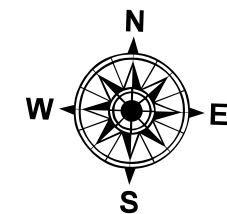
COHOCTAH TOWNSHIP

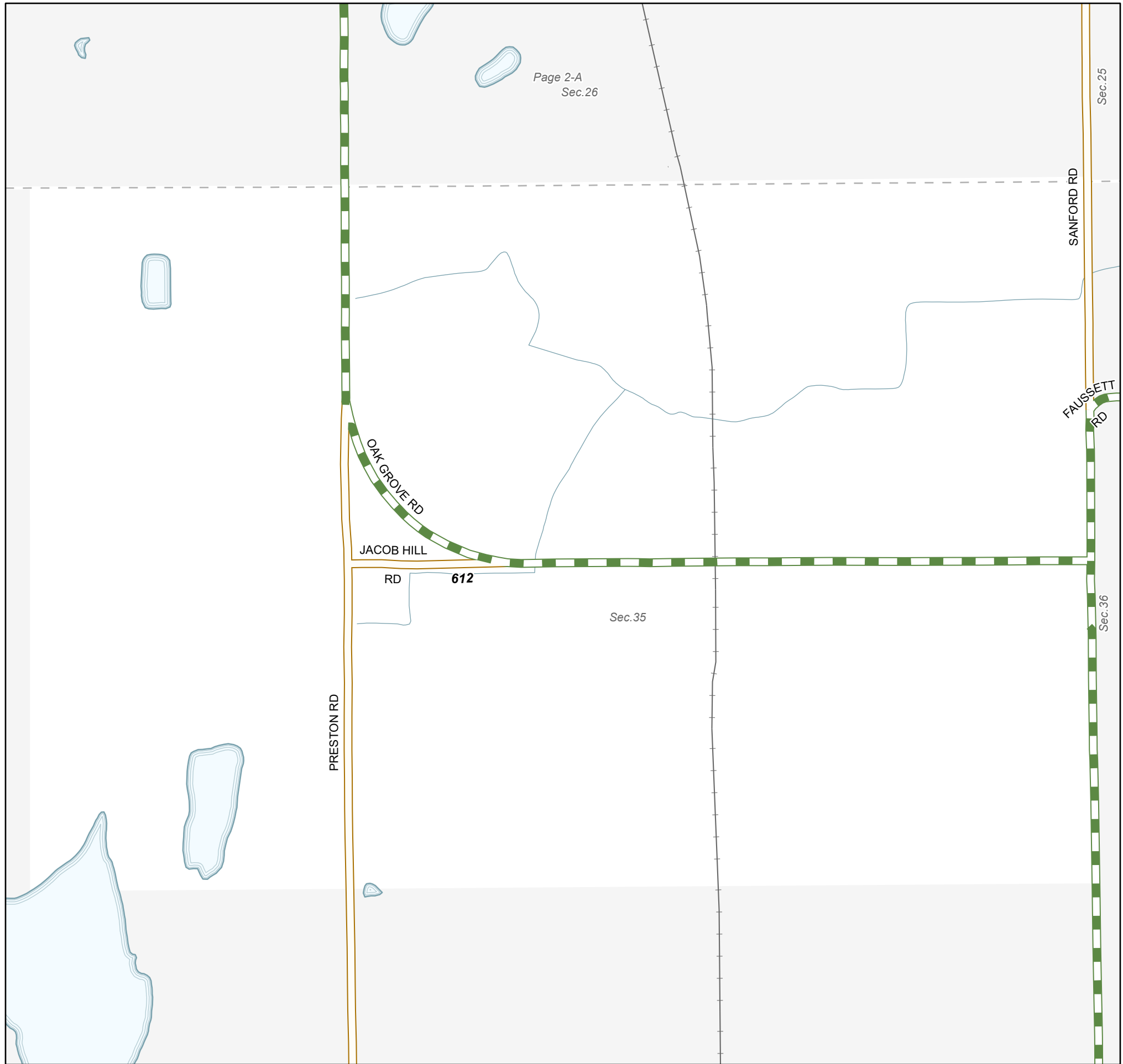
LIVINGSTON COUNTY - 47 T. 4N R. 4E

SECTION 28

TOTAL FEET 328 EQUALS 0.06 MILES

LEGEND	
COUNTY LINE	-----
CORPORATE LIMITS	-----
SECTION LINE	-----
STATE TRUNKLINE	—————
COUNTY PRIMARY	▬▬▬▬▬▬
COUNTY LOCAL	▬▬▬▬▬▬
ADJACENT COUNTY	▬▬▬▬▬▬
CITY OR VILLAGE STREET	—————





COHOCTAH TOWNSHIP

LIVINGSTON COUNTY - 47 T. 4N R. 4E

SECTION 35

TOTAL FEET 612 EQUALS 0.12 MILES

LEGEND	
COUNTY LINE	-----
CORPORATE LIMITS	-----
SECTION LINE	-----
STATE TRUNKLINE	—————
COUNTY PRIMARY	▬▬▬▬▬▬
COUNTY LOCAL	▬▬▬▬▬▬
ADJACENT COUNTY	▬▬▬▬▬▬
CITY OR VILLAGE STREET	—————

