

Livingston County Road Commission

3535 Grand Oaks Drive • Howell, Michigan 48843-8575
Telephone: (517) 546-4250 • Facsimile: (517) 546-9628
Internet Address: www.livingstonroads.org

CHALLIS ROAD CONSTRUCTION UPDATE

3/21/18

The long awaited reconstruction of Challis Road is scheduled to begin on **Monday April 2nd**. The work entails the complete reconstruction of the road base, drainage and surface. Traffic on this route has steadily increased over the past several years and the opening of the new U of M hospital is anticipated to dramatically increase traffic volumes and patterns. It is important to complete improvements before the hospital begins to receive patients in September 2018.

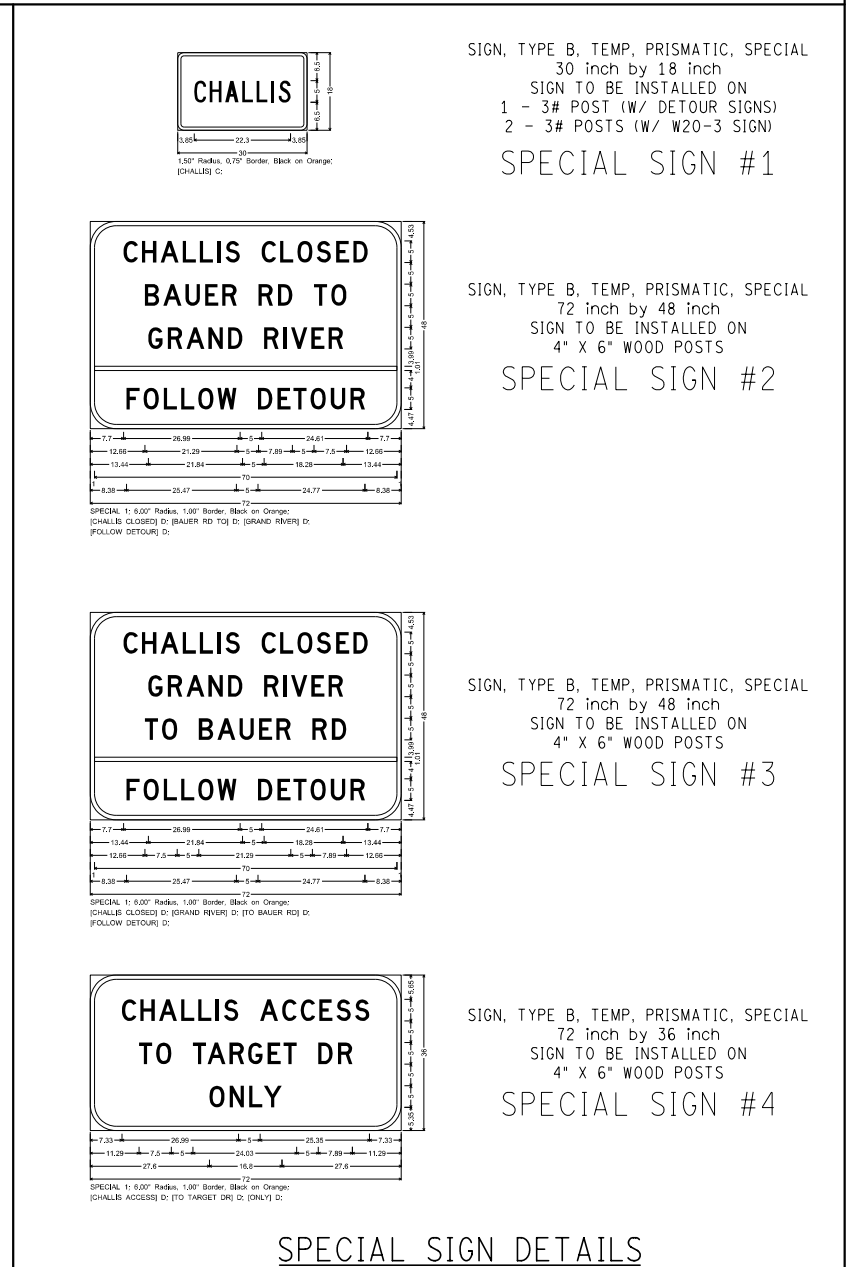
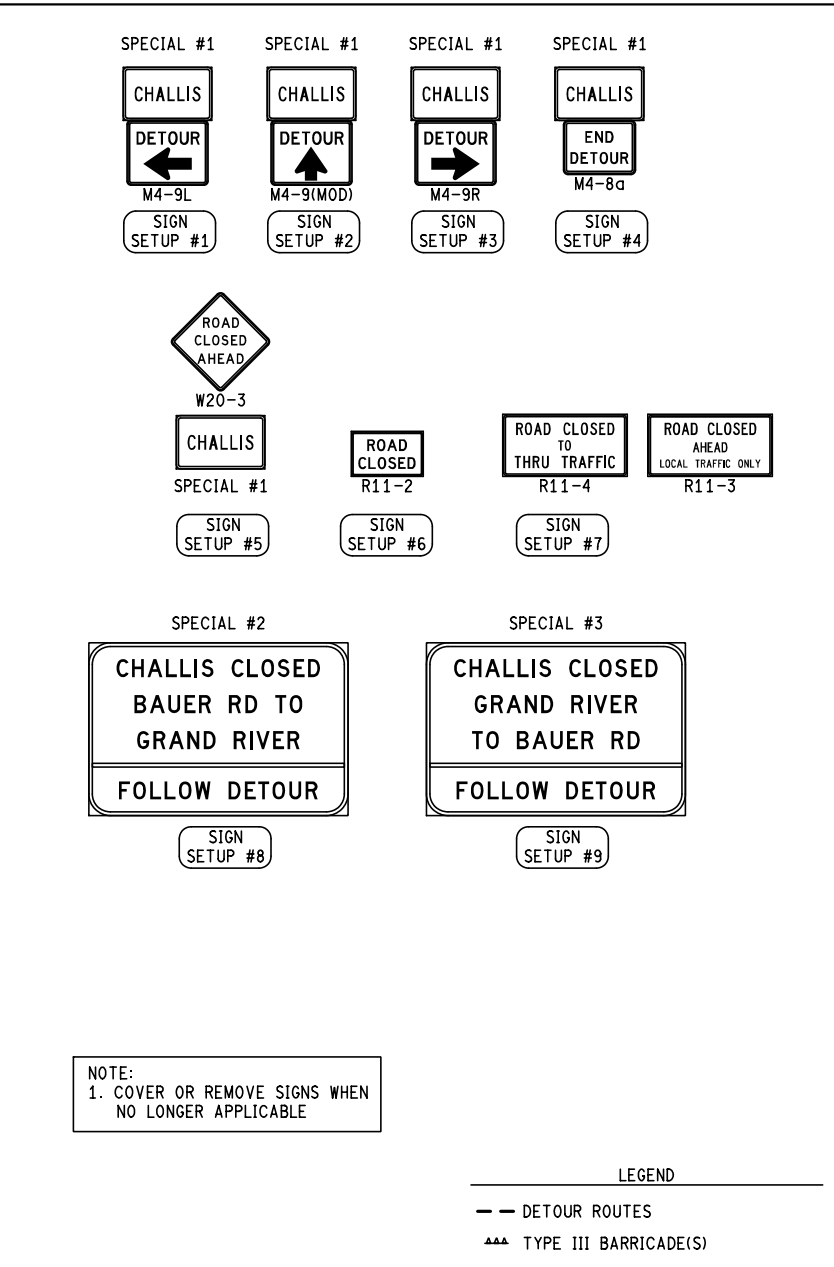
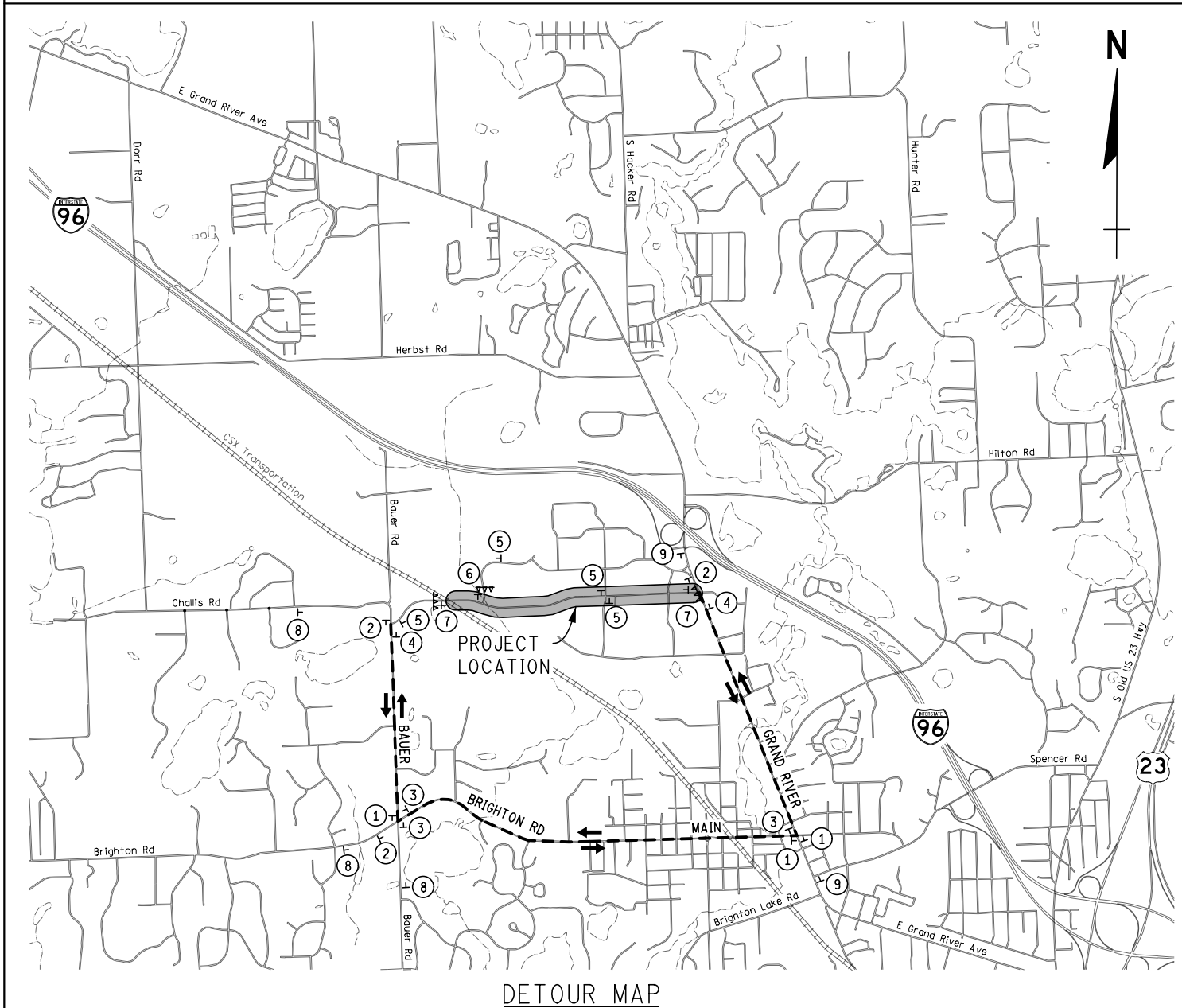
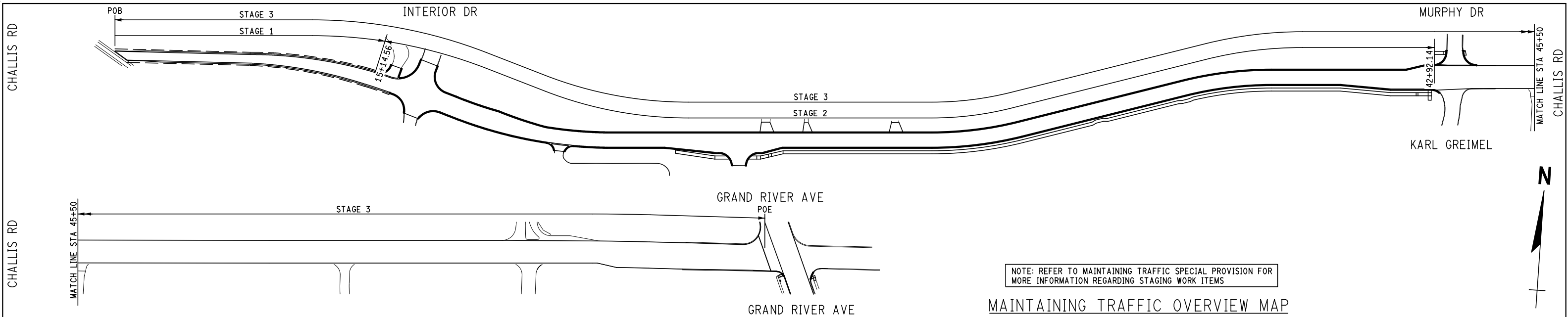
The project will be built in 3 phases.

Phase 1: Entails closing Challis Road from the CSX Railroad to Interior Drive. Interior Drive will remain open to traffic from the east through this phase of Construction. A detour route will be posted. The closure will begin April 2nd and will remain closed for 21 days.

Phase 2: Challis Road from Interior Drive to Karl Greimel Drive will be closed for the duration of the project to perform watermain relocation, road widening and realignment, and asphalt paving. Interior drive will remain open to traffic from the west. This work is anticipated to start on April 23rd and Challis Road will remain closed until August 30th.

Phase 3: Includes milling the existing asphalt surface from Karl Greimel Drive to Grand River Avenue and placing new asphalt surface. This work will be performed at night between 8p.m. and 6a.m., beginning August 23rd through August 30th. This phase also includes placing the top course of asphalt on Challis Road from the railroad tracks to Karl Greimel Drive.

Attached is the detour map and maintaining traffic overview. Please visit our website at <http://livingstonroads.org/PROJECTS/ChallisRoadProject.aspx> and sign up for the Challis Road Construction updates in the Projects section of our website.



| FINAL ROW PLAN REVISIONS | | | | (SUBMITTAL DATE:) | | | |
|--------------------------|------|------|-------------|--------------------|------|------|-------------|
| NO. | DATE | AUTH | DESCRIPTION | NO. | DATE | AUTH | DESCRIPTION |
| | | | | | | | |

| | | | | |
|------------------------------|-----------------------------------|----------|-------------------------|---------------|
| | Livingston County Road Commission | NO SCALE | DATE: 11/09/17 | CS: STU 47000 |
| FILE: Challis_MOTDet_001.dgn | | | DESIGN UNIT: TETRA TECH | JN: 200905A |
| | | | TSC: | |

| | | |
|--|---------|--------|
| MAINTAINING TRAFFIC OVERVIEW SHEET | DRAWING | SHEET |
| CHALLIS ROAD (CSX RR TO GRAND RIVER AVE) | CHALLIS | SECT 1 |
| | MTVIC | 001 |
| | | 40 |